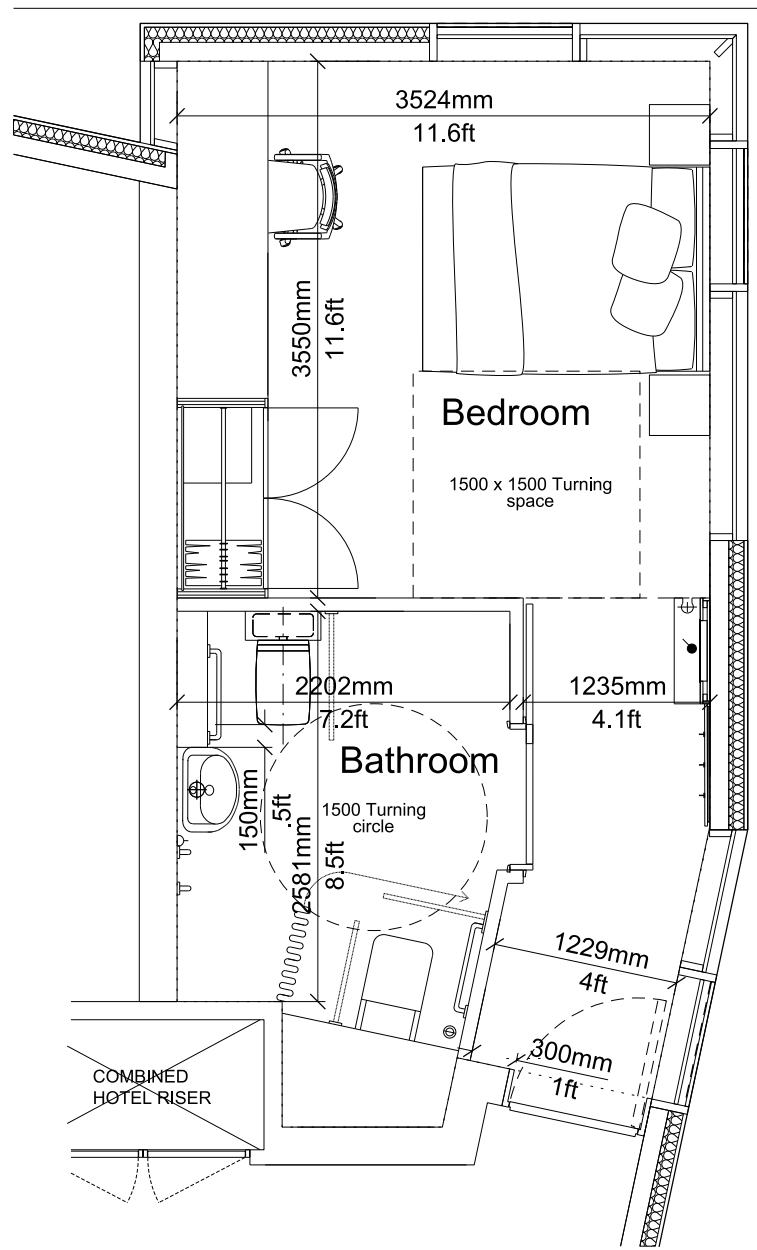
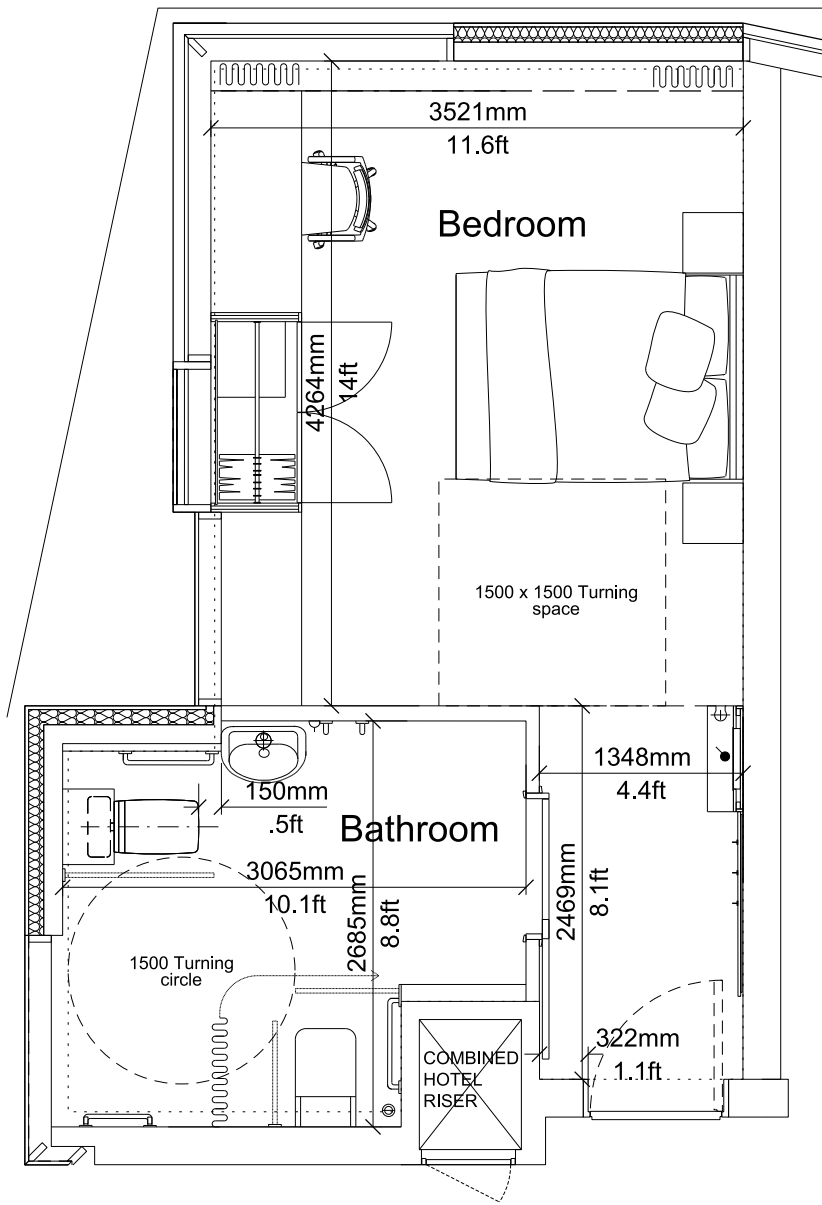


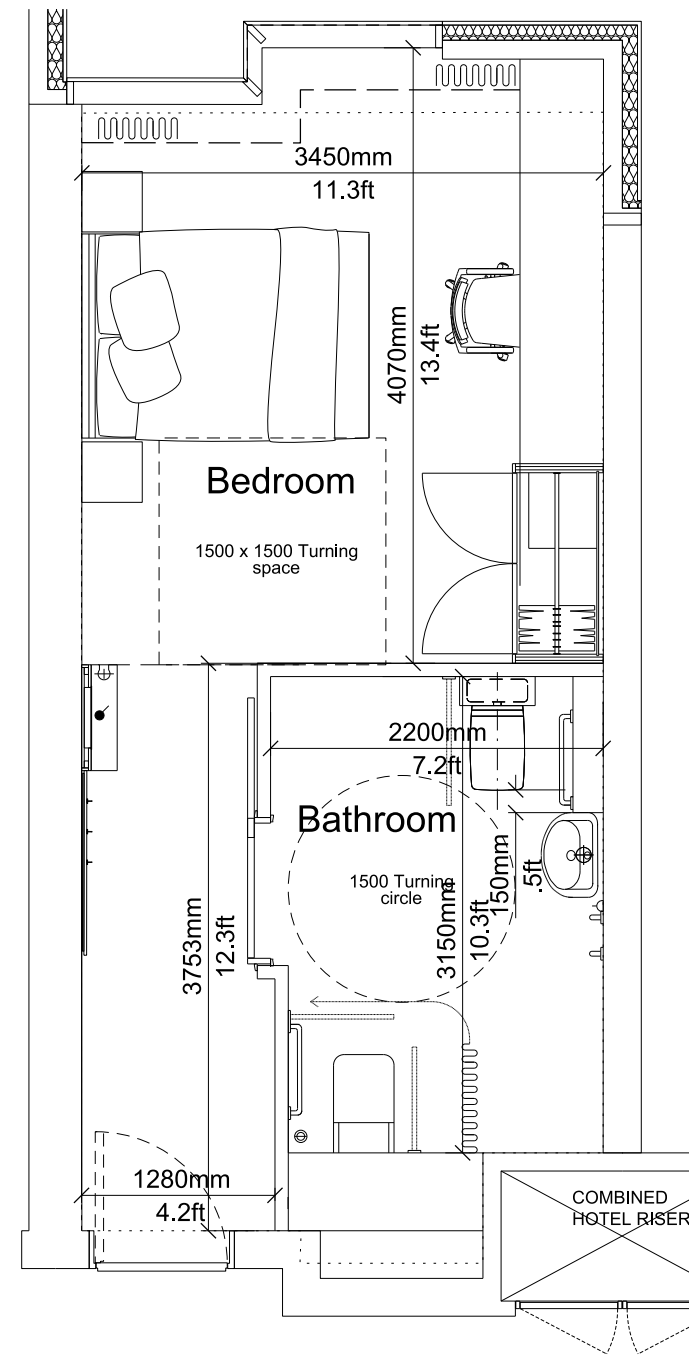
01 Standard Accessible Unit (23.20Sqm)  
Typical Hotel Layout



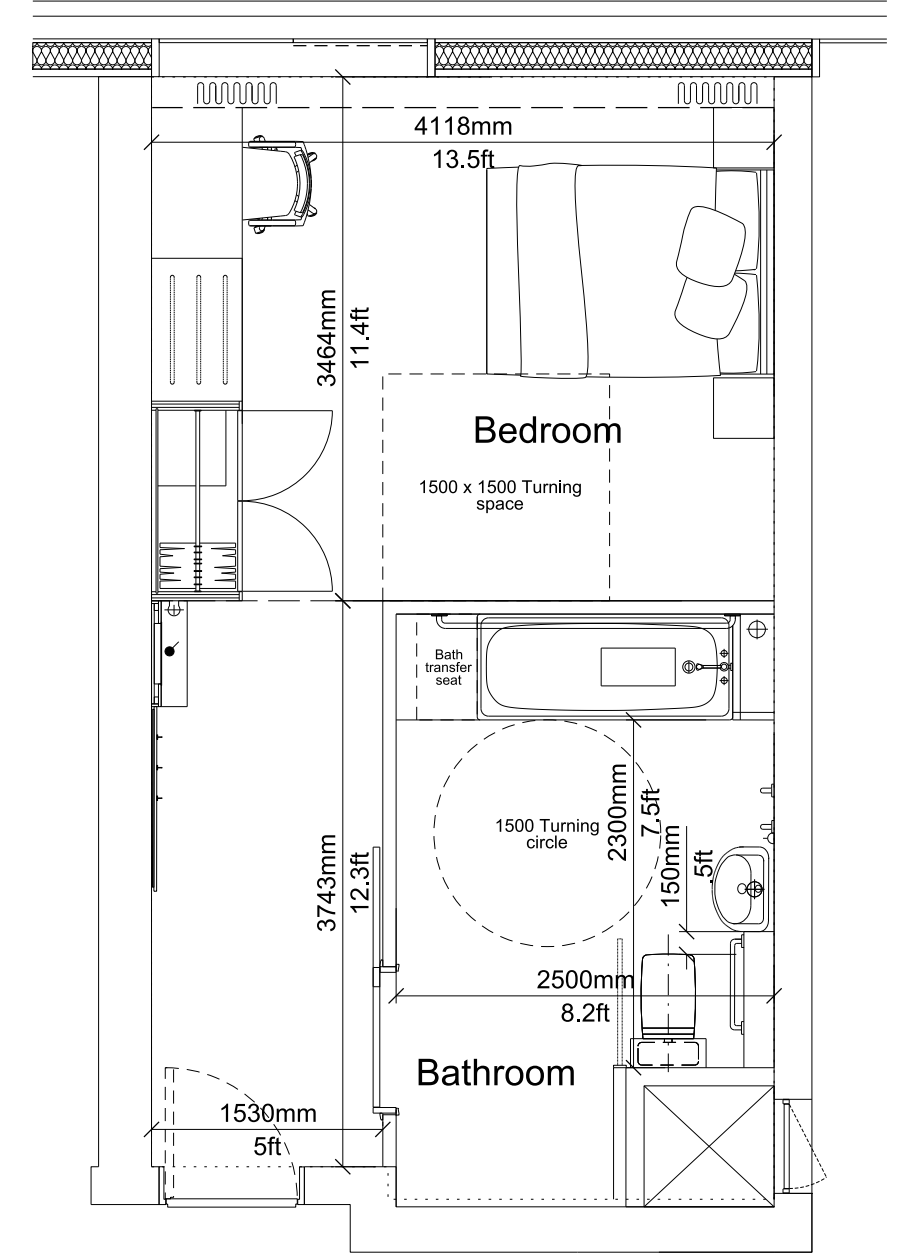
02 Standard Accessible Unit (23.60 Sqm)  
Typical Hotel Layout



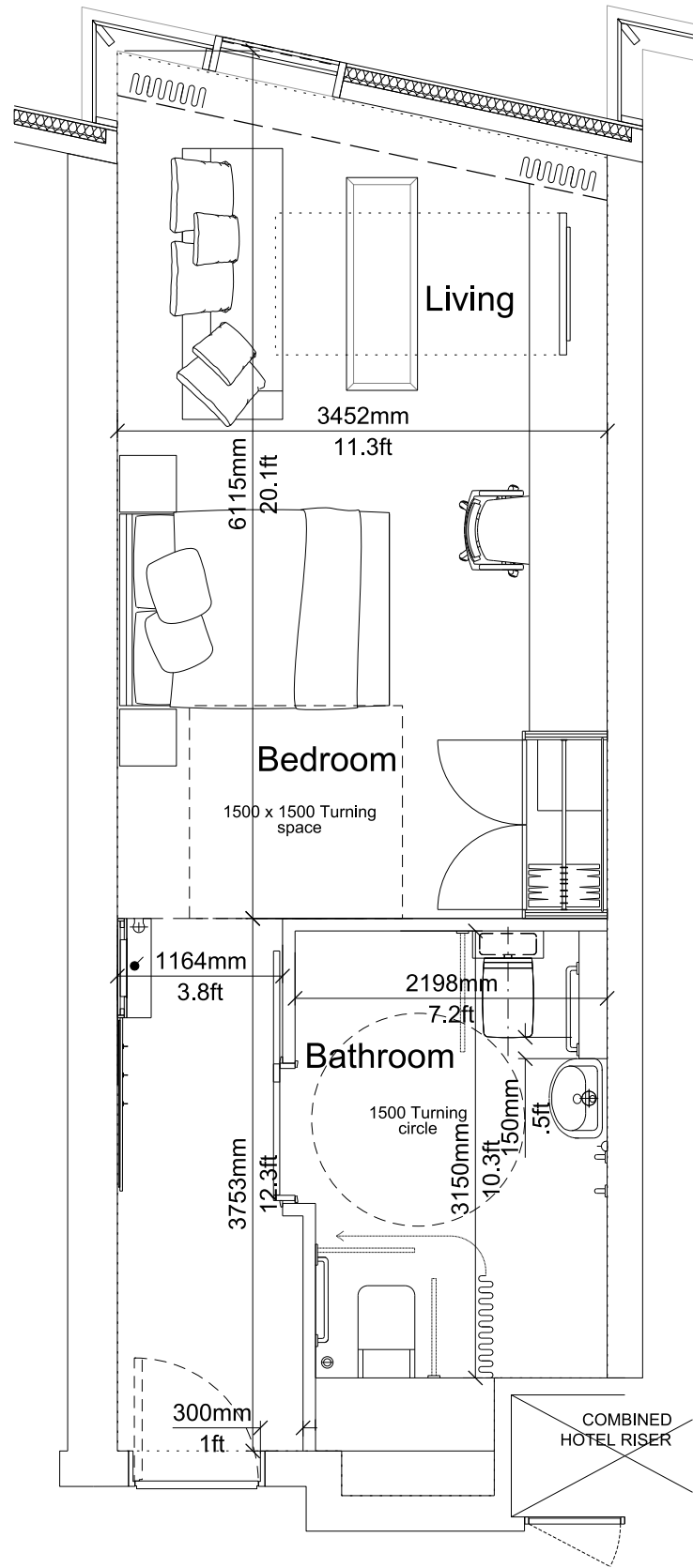
03 Standard Accessible Unit (25.65 Sqm)  
Typical Hotel Layout



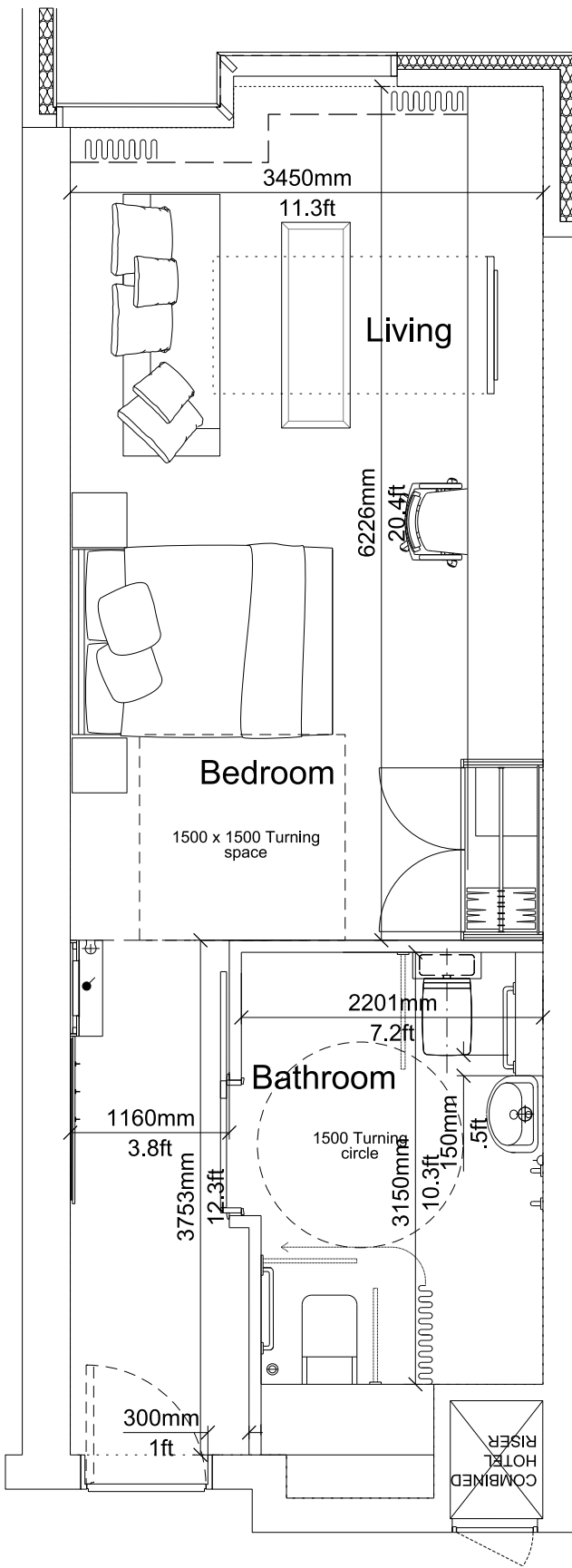
04 Superior Accessible Unit (26.43 Sqm)  
Typical Hotel Layout



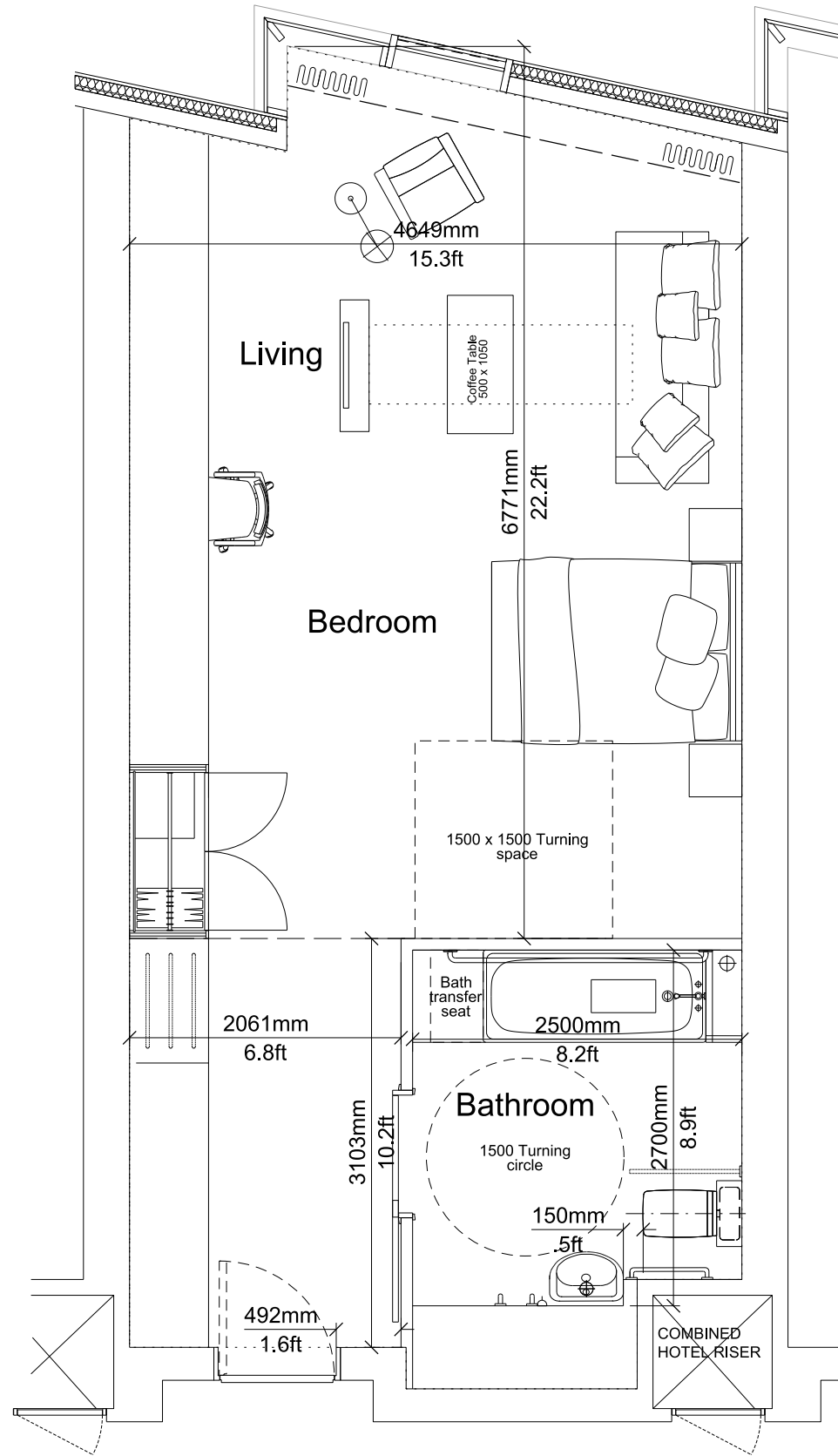
05 Superior Accessible Unit (30.21 Sqm)  
Typical Hotel Layout



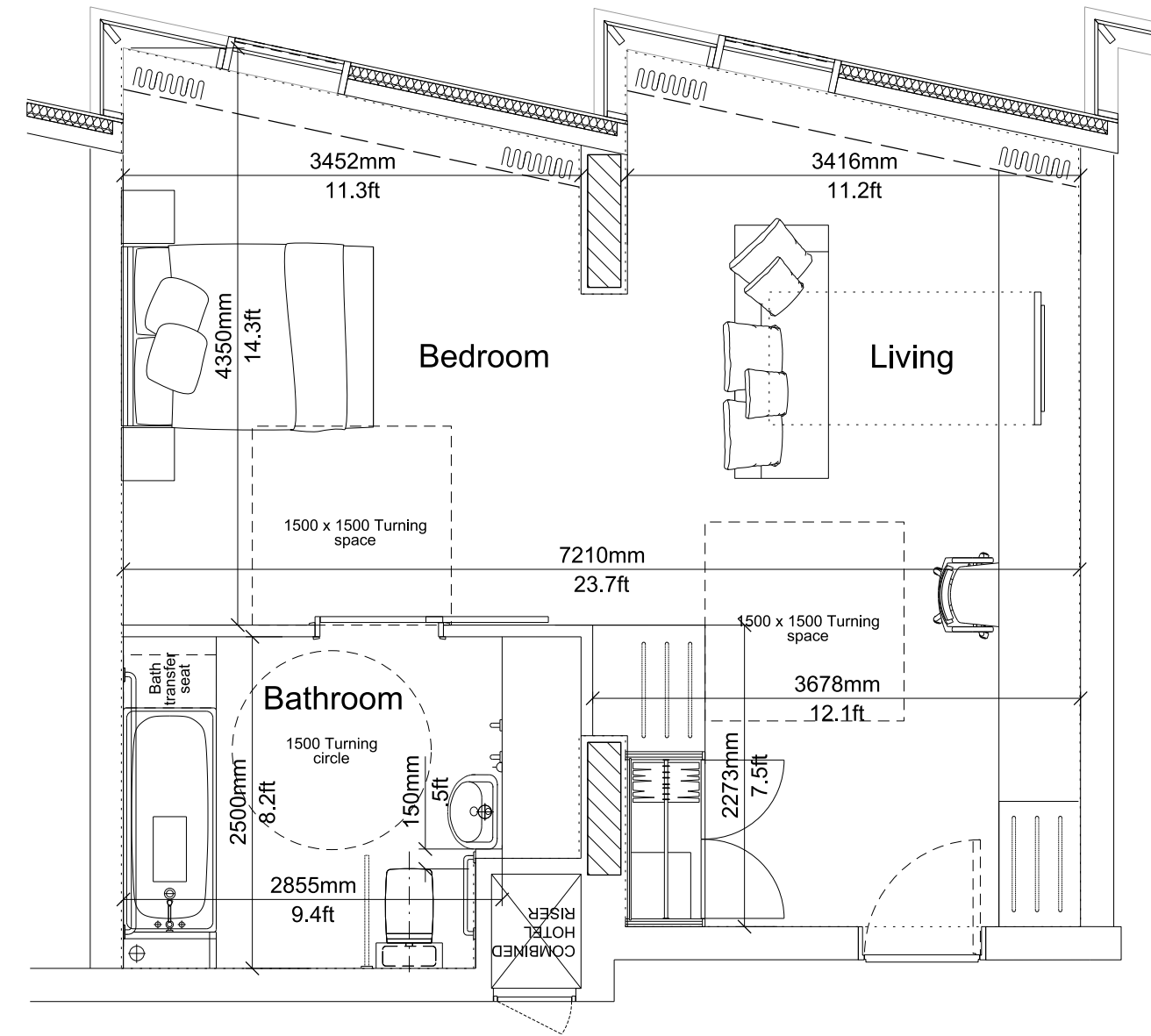
06 Deluxe Accessible Unit (32.85 Sqm)  
Typical Hotel Layout



07 Deluxe Accessible Unit (33.86 Sqm)  
Typical Hotel Layout



08 Suite Accessible Unit (44.05 Sqm)  
Typical Hotel Layout

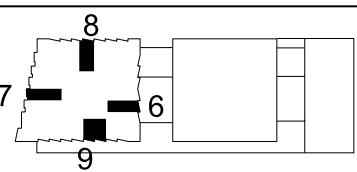
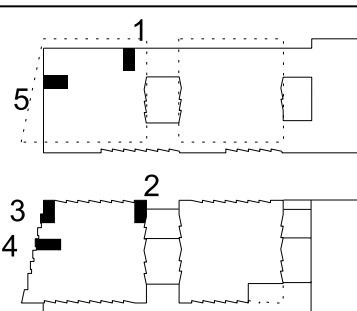


09 Suite Accessible Unit (44.52 Sqm)  
Typical Hotel Layout

This drawing is copyright  
Do not scale off dimensions.  
All dimensions to be checked on site by contractor.  
Contractor to report any dimensional discrepancies,  
errors or omissions prior to commencing on site.



NOTE:



NORTH

Rev	Date	Description
-	15/06/2018	Full Planning Application

Project Title  
Kensington Forum Hotel  
Kensington, London

Status  
PLANNING

Drawing Title  
Typical Hotel Wheelchair Accessible  
Layout Plans

Job No	Scale	Date
10106	1:50@ A1	JAN 2019

Drawing No	Revision
10106-A-DRG-Z2-F200-2102-PL	-

**simpsonhaugh**

MANCHESTER  
Riverside, 4 Commercial St  
Manchester M15 4EQ  
+44 (0)161 835 2345  
www.simpsonhaugh.com

LONDON  
5-8 Roberts Place  
London EC1R 9BB  
+44 (0)20 7549 4000  
mail@simpsonhaugh.com